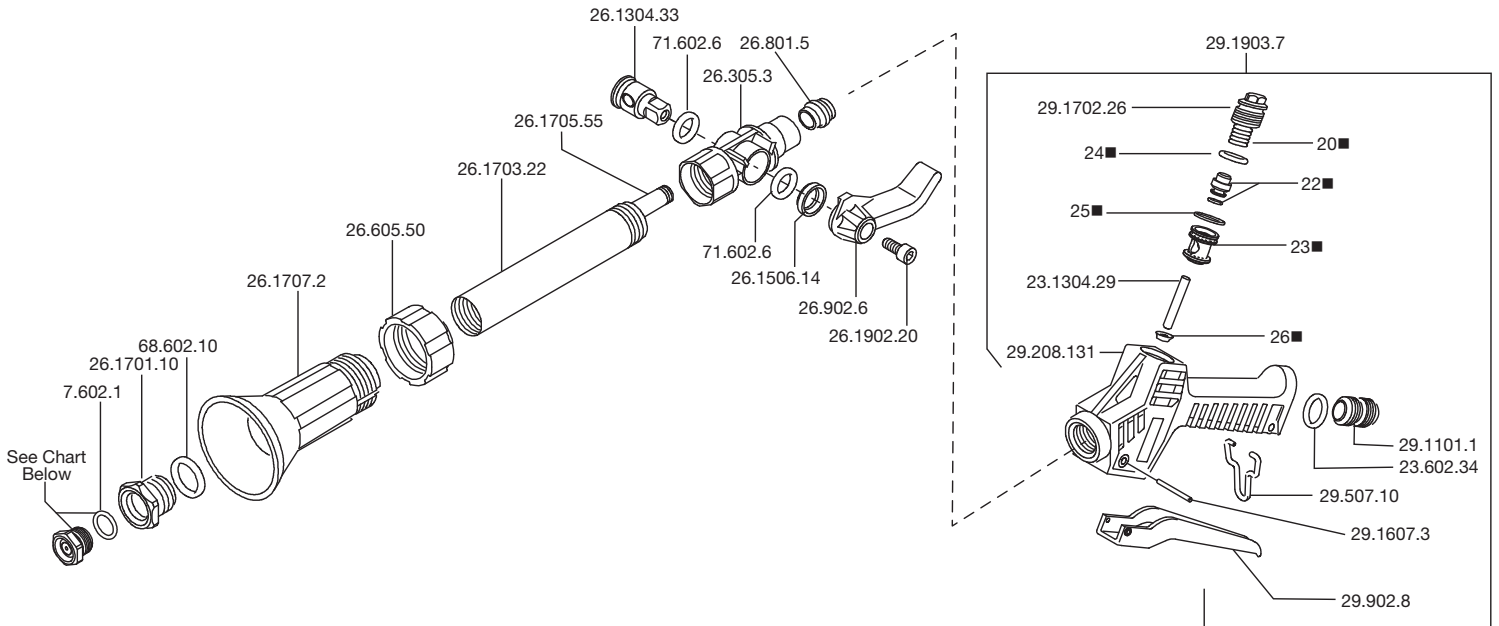


26.901.162 (Turbo)

High Performance Adjustable Spray Gun

Maximum Flow 15.0 GPM / 57 lpm
 Maximum Pressure 850 PSI / 58 bar



Revised 8-10-2022

| Part # | Description | Qty |
|------------|------------------|-----|
| See Chart | Spray Tip | 1 |
| 23.602.34 | O-Ring | 1 |
| 23.1304.29 | Plunger | 1 |
| 26.1304.33 | Regulator | 1 |
| 26.1506.14 | Spacer | 1 |
| 26.1701.10 | Nozzle Retainer | 1 |
| 26.1703.22 | Outer Tube | 1 |
| 26.1705.55 | Inner Tube | 1 |
| 26.1707.2 | Nozzle Protector | 1 |
| 26.1902.20 | Bolt | 1 |
| 26.305.3 | Body | 1 |
| 26.605.50 | Nut | 1 |
| 26.801.5 | Insert Guide | 1 |
| 26.902.6 | Adjustment Lever | 1 |
| 29.1101.1 | Inlet Adapter | 1 |
| 29.1607.3 | Trigger Pin | 1 |

| Part # | Description | Qty |
|------------|------------------|-----|
| 29.1702.26 | Plug | 1 |
| 29.1903.7 | Trigger Gun | 1 |
| 29.208.131 | Gun Body | 1 |
| 29.507.10 | Trigger Clip | 1 |
| 29.902.8 | Trigger Assembly | 1 |
| 68.602.10 | O-Ring | 1 |
| 7.602.1 | O-Ring | 1 |
| 71.602.6 | O-Ring | 2 |
| 20 | Spring | 1 |
| 22 | Poppet Assy | 1 |
| 24 | O-Ring | 1 |
| 25 | O-Ring | 1 |
| 26 | Seal | 1 |
| 8711.03 | Repair Kit | 1 |

■ Parts Included in Repair Kit 8711.03

Spray Tip Performance Chart

| Model | Orifice (mm) | Material | Gallons per Minute / Maximum Spray Distance in Feet | | | | |
|------------|--------------|----------|---|-----------|-----------|-----------|-----------|
| | | | 100 PSI | 200 PSI | 400 PSI | 600 PSI | 800 PSI |
| 68.1802.51 | 1.5 | Ceramic | .78 / 17 | 1.1 / 20 | 1.5 / 23 | 1.8 / 25 | 2.1 / 27 |
| 68.1802.52 | 1.8 | Ceramic | 1.1 / 19 | 1.6 / 21 | 2.3 / 24 | 2.6 / 26 | 2.9 / 28 |
| 68.1802.53 | 2.0 | Ceramic | 1.4 / 21 | 2.0 / 24 | 2.8 / 26 | 3.4 / 29 | 3.8 / 32 |
| 68.1802.54 | 2.3 | Ceramic | 2.0 / 24 | 2.5 / 29 | 4.0 / 34 | 5.0 / 42 | 5.5 / 45 |
| 68.1802.16 | 2.5 | Ceramic | 2.5 / 23 | 3.0 / 28 | 4.5 / 32 | 5.5 / 40 | 6.5 / 44 |
| 68.1802.17 | 3.0 | Ceramic | 3.0 / 28 | 4.5 / 29 | 6.5 / 34 | 8.0 / 41 | 9.0 / 44 |
| 13.1802.73 | 3.5 | S/S | 4.5 / 31 | 6.0 / 36 | 8.5 / 41 | 11.0 / 50 | 12.0 / 54 |
| 13.1802.58 | 4.0 | S/S | 5.0 / 35 | 7.5 / 38 | 10.0 / 43 | 13.5 / 53 | 14.5 / 59 |
| 13.1802.59 | 4.5 | S/S | 6.5 / 37 | 9.0 / 39 | 12.5 / 44 | 16.5 / 54 | 18.0 / 62 |
| 13.1802.60 | 5.0 | S/S | 7.5 / 33 | 10.0 / 41 | 14.0 / 47 | 18.5 / 59 | 21.0 / 67 |
| 13.1802.61 | 5.5 | S/S | 8.0 / 35 | 11.5 / 42 | 16.0 / 47 | 21.0 / 59 | 23.0 / 70 |
| 13.1802.75 | 6.0 | S/S | 9.0 / 38 | 12.5 / 44 | 18.0 / 54 | 23.0 / 66 | 26.0 / 74 |
| 13.1802.74 | 7.0 | S/S | 9.5 / 21 | 13.5 / 47 | 19.0 / 57 | 24.0 / 70 | 27.0 / 77 |